

Butterfly lighting style (see reverse for details). Photo: Ben Brain and James Paterson

In association with

 **elinchrom** 
creative image lighting technology

 **NPhoto**
100% NIKON 100% INDEPENDENT

PhotoPlus CANON EDITION

LIGHTING GUIDE

Master professional portrait lighting with these 20 essential studio setups

REMBRANDT WITH A PORTALITE SOFTBOX



KIT: One D-lite RX4 head, one Clip-lock Stand, one Portalite Softbox
Position the light high and to the side to create a triangle of light on the model's cheek. The shadow of the nose should point towards the edge of the lips. The Portalite creates a soft directional effect.



REMBRANDT THROUGH AN UMBRELLA



KIT: One D-lite RX4 head, one Clip-lock Stand, one 16cm Reflector, one Shoot-through Umbrella
Position the light high and to the side as with the 'Rembrandt with a Portalite Softbox' setup. The light is slightly less directional, because the light is less directional and there is always some reflection from the studio surroundings.



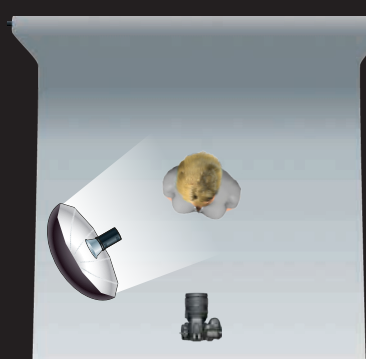
REMBRANDT WITH A HONEYCOMB GRID



KIT: One D-lite RX4 head, one Clip-lock Stand, one 18cm Reflector with Honeycomb
Position the light in the same manner as the previous 'Rembrandt' techniques; the light through the honeycomb grid is stronger and more dramatic. The grid makes it very easy to direct the light on to the model and away from the background, which becomes dark.



REMBRANDT WITH A SILVER UMBRELLA



KIT: One D-lite RX4 head, one Clip-lock Stand, one 16cm Reflector, one Silver Umbrella
Position the light in the same manner as the previous 'Rembrandt' techniques. The light bouncing from the silver umbrella is more direct and wraps around the features of the face yet still creates the shadow from the nose towards the mouth.



REMBRANDT SHORT



KIT: One D-lite RX4 head, one Clip-lock Stand, one Portalite Softbox
Use the principles of 'Rembrandt' lighting to create the triangle of light on the face. Position the model's head at an angle and light it from the left side, so the side of the face closer to the camera falls into shade.



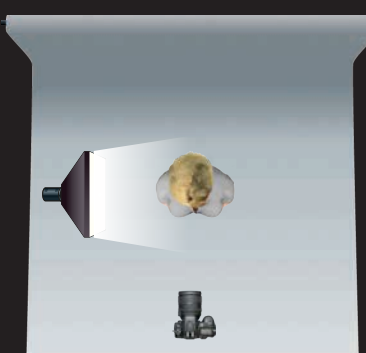
REMBRANDT BROAD



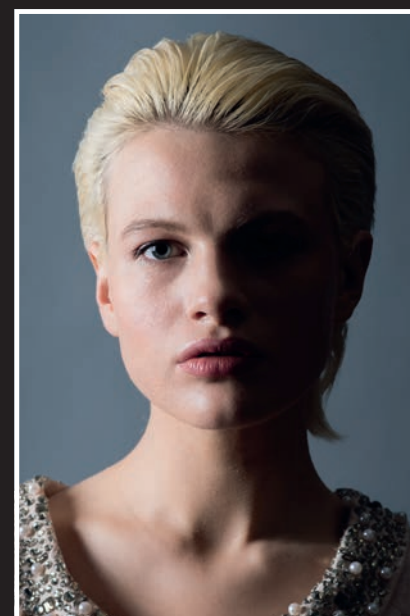
KIT: One D-lite RX4 head, one Clip-lock Stand, one Portalite Softbox
Use the principles of 'Rembrandt' lighting to create the triangle of light on the face. Position the model's head at an angle and light it from the right side, so the side of the face closest to the camera is lit.



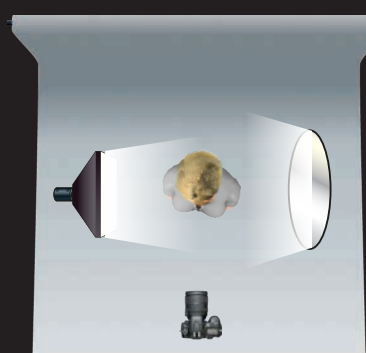
SPLIT



KIT: One D-lite RX4 head, one Clip-lock Stand, one Portalite Softbox
Position a light to one side of the model in such a way that no light spills onto the other side of the face, with a shadow line running down the centre. We've used a softbox here, but any of the light modifiers would work.



SPLIT WITH FILL



KIT: One D-lite RX4 head, one Clip-lock Stand, one Portalite Softbox, one small reflector
Position a light to one side of the model in such a way that no light spills onto the far side of the face, with a shadow line running down the centre. Position a reflector on the opposite side to bounce light back into the face and fill some of the shadows.



SPLIT/SHORT



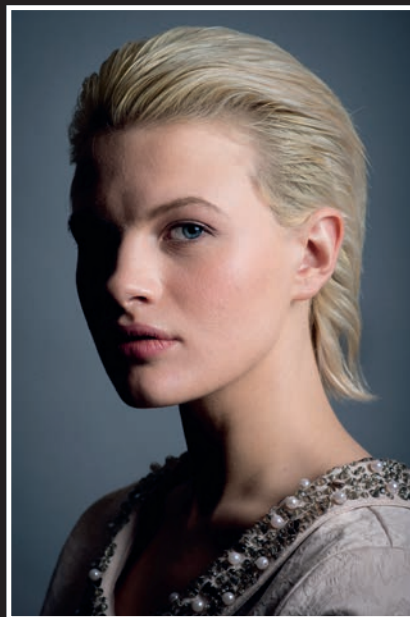
KIT: One D-lite RX4 head, one Clip-lock Stand, one Portalite Softbox
Use the 'Split' technique with no light spilling onto one side of the face and pose the model so that her head is at an angle. Position the light so that the far (short) side is lit and the rest of the face is in shadow.



SPLIT/BROAD



KIT: One D-lite RX4 head, one Clip-lock Stand, one Portalite Softbox
Use the 'Split' technique with no light spilling onto one side of the face and pose the model so that her head is at an angle. Position the light so that the near (broad) side is lit and the rest of the face is in shadow.



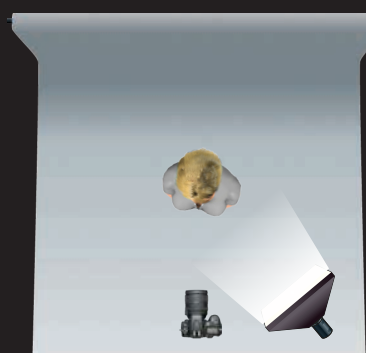
KEY WITH A CLOSE PORTALITE SOFTBOX



KIT: One D-lite RX4 head, one Clip-lock Stand, one Portalite Softbox
Position the softbox above and to one side of the model for a classic 'Rembrandt' effect. Place the softbox half a metre away; this will create softer shadows. Look at the soft shadow from the nose. Notice also the darkened background, also due to the Portalite being closer.



KEY WITH A FAR AWAY PORTALITE SOFTBOX



KIT: One D-lite RX4 head, one Clip-lock Stand, one Portalite Softbox
Position the softbox above and to one side of the model for a classic 'Rembrandt' effect. This time place the softbox two metres or more away; this will create more defined shadows. Look how hard the shadow from the nose is.



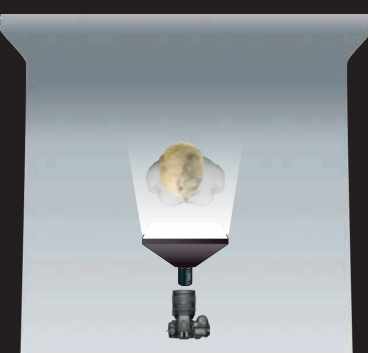
LOOP



KIT: One D-lite RX4 head, one Clip-lock Stand, one Portalite Softbox
This setup is similar to 'Rembrandt', but rather than creating a closed triangle of light on the model's face, the shadow from the nose should create a loop pointing towards the corner of the mouth.



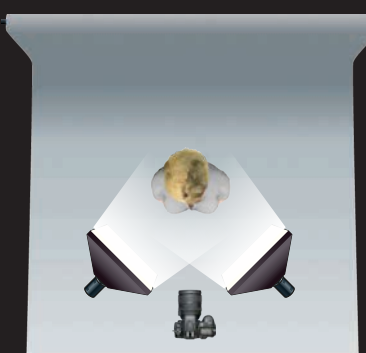
BUTTERFLY



KIT: One D-lite RX4 head, one Clip-lock Stand, one Portalite Softbox
Position one light above and directly in line with the centre of the subject's face. Notice how there's an even shadow under the nose. It's best if this shadow doesn't reach all the way down to the upper lip.



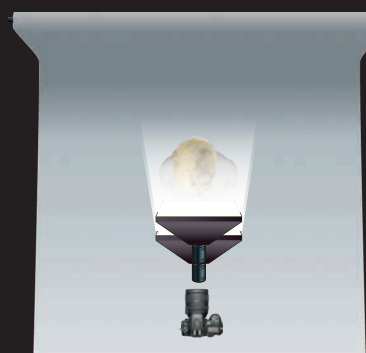
FLAT LIGHT



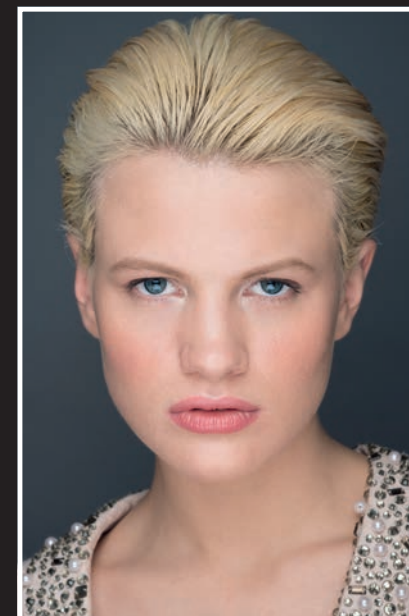
KIT: Two D-lite RX4 heads, two Clip-lock Stands, two Portalite Softboxes
Use a second D-lite Strobe and Portalite softbox for this setup and position both lights (each set to the same power and the same angle) either side of the model at head height. This will give a very even light. Notice the lack of shadows.



CLAMSHELL



KIT: Two D-lite RX4 heads, two Clip-lock Stands, two Portalite Softboxes
This is a great beauty setup. Position one softbox slightly above the model in the centre and angled downwards and one slightly below, also in the centre but angled upwards. A boom arm to support the top light is useful but not essential.



Studio lighting simplified

THE ELINCHROM D-LITE RX 4/4 PORTALITE KIT



- 1 2x D-LITE 4 HEADS
400 Ws strobes with modelling lamps and built-in radio receivers
- 2 2x CLIP-LOCK STANDS
Three sections extending to 2.3m, quick and easy to use
- 3 SKYPORT TRANSMITTER
Fits to the hotshoe of your camera giving wireless synchronisation and remote control
- 4 1x STAND BAG
Carry and store your stands and accessories
- 5 1x TUBE BAG
Carry and store your heads etc
- 6 2x HEAD CAPS
Protect your strobes when not in use
- 7 1x 16cm REFLECTOR
Very useful when using umbrellas or as an accessory on its own
- 8 2x PORTALITE SOFTBOXES
Made with the same quality material as the Elinchrom Rotalux range, giving great light performance

LOOP WITH A BACKGROUND LIGHT



KIT: Two D-lite RX4 heads, two Clip-lock Stands, one Portalite Softbox
Use a simple 'Loop' or 'Rembrandt' setup and position a second light behind the model, pointing at the background. Adjust the strength and angle of the flash to vary the intensity and the gradient of the light on the background.



LOOP WITH A RIM LIGHT



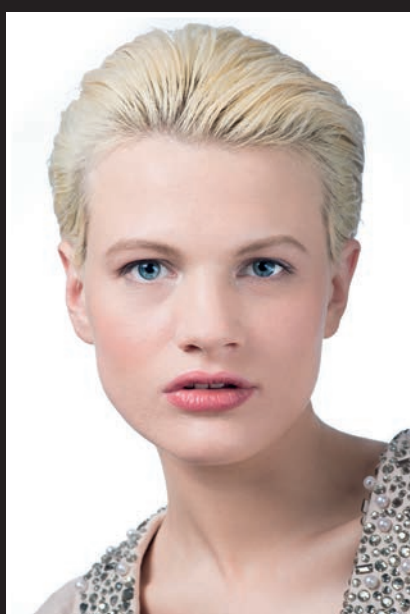
KIT: Two D-lite RX4 heads, two Clip-lock Stands, one Portalite Softbox, one 18cm Reflector with Honeycomb Grid
Use a simple 'Loop' or 'Rembrandt' setup, but add a second light with an 18cm Reflector and Grid attached (or use a snoot) placed behind the model. Angle the D-lite precisely, using the modelling light so that the light catches the edge of the model's hair.



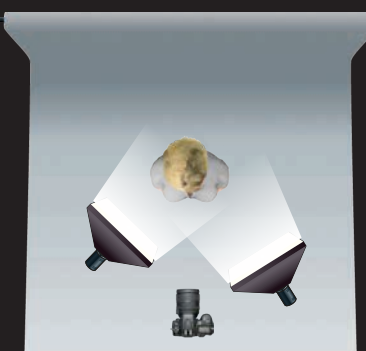
HIGH KEY



KIT: Two D-lite RX4 heads, two Clip-lock Stands, one Portalite Softbox, one Pop-up Reflector
Use one D-lite with the Softbox as your key light and a large silver reflector to bounce light back into the face. To make the background completely white, place the second D-lite behind the model, point it at the backdrop and use a higher power setting.



KEY AND FILL



KIT: Two D-lite RX4 heads, two Clip-lock Stands, two Portalite Softboxes
Set a key light above the subject and at a 45 degree angle to create a basic 'Loop' setup. Position a second light in a lower position and to the other side of the model, reduce its power to roughly half that of your key light.



For your success...

FREE LIGHTING SOLUTIONS INCLUDED
For a limited time purchase any Elinchrom D-lite RX or BRX Kit and receive a voucher for free annual membership to The Photographer Academy worth £49. Plus, a voucher worth £100 off a £200 Lighting Workshop with Mark Cleghorn Photography Training!
www.thephotographeracademy.com

FREE BUSINESS DEVELOPMENT INCLUDED
Join the award-winning Aspire Photography Training team with a 12-month complimentary subscription to their online business development programmes. Plus, a voucher worth £100 towards any seminar of your choice!
www.aspirephotographytraining.co.uk

BROCHURES AND DOWNLOADS



THE FLASH CENTRE, LIGHTING YOUR WAY...



Follow us on Twitter @TheFlashCentre
Join us on Facebook www.facebook.com/FlashCentre
The Flash Centre Blog www.theflashcentre.com/blog

